

EPT12-F3H

High-lift Pallet Truck 1200kg



- Combine horizontal transportation and vertical stacking for high adaptability
- Max lifting height of 990mm to retrieve goods from vans
- Standard removable Li-ion battery grants efficiency and convenience
- Compact and lightweight design for cargo lift and mezzanine usage
- Turtle speed for good maneuverability in narrow aisles

Manufacturer			EP
Model designation			EPT12-F3H
Drive			Electric
Load capacity	Q	kg	1200
Load center distance	c	mm	500
Service weight		kg	263
Lift height	h3	mm	905
Height, mast extended	h4	mm	1596
Length to face of forks	l2	mm	525
Overall width	b1/b2	mm	616/685
Fork dimensions	s/e/l	mm	60/150/1070
Turning radius	Wa	mm	1400
Max. gradeability, laden/unladen		%	5/8
Travel speed, laden/unladen		km/h	3.7/4.0
Lifting speed, laden/unladen		m/s	Level 1 0.033/0.045 Level 2 0.048/0.094
Lowering speed, laden/unladen		m/s	Level 1 0.054/0.035 Level 2 0.106/0.104
Battery voltage/nominal capacity		V/Ah	24/30

Features

High Adaptability

Both horizontal transportation and vertical stacking available
Switch by the push of a button

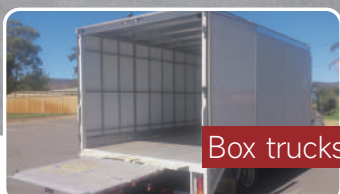


Suitable for loading
and unloading from:

REGULAR PALLET TRUCKS

990
MM

EPT15-F3H



Box trucks



Vans



Trolleys



01

Transportation
across Mezzanines

Service Weight
263kg Only



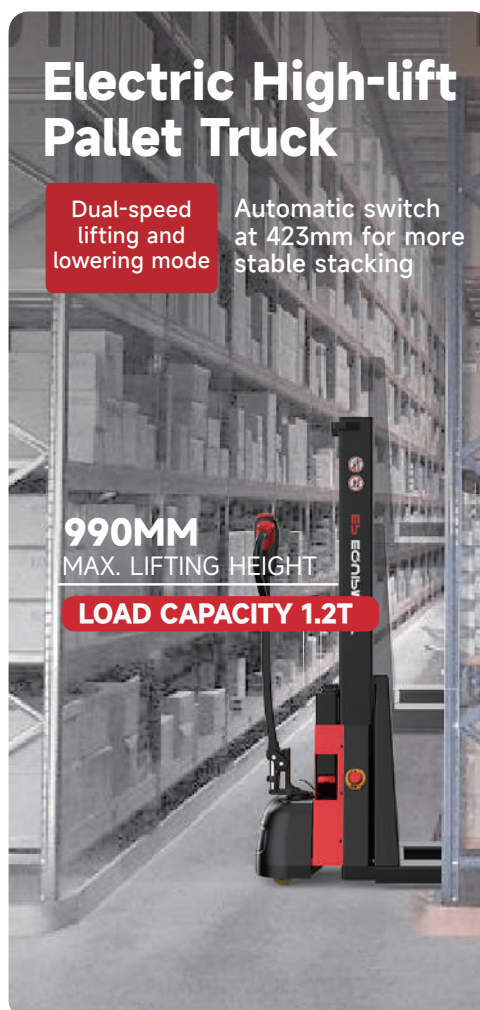
Electric High-lift Pallet Truck

Dual-speed
lifting and
lowering mode

Automatic switch
at 423mm for more
stable stacking

990MM
MAX. LIFTING HEIGHT

LOAD CAPACITY 1.2T



LCD display as standard 02

Monitoring battery status, error and
truck status



Emergency switch as
standard 03

The power supply can be easily cut off in
case of uncontrolled operation.

▣ Features

Easy Operation, Easy Maintenance

Streamline appearance

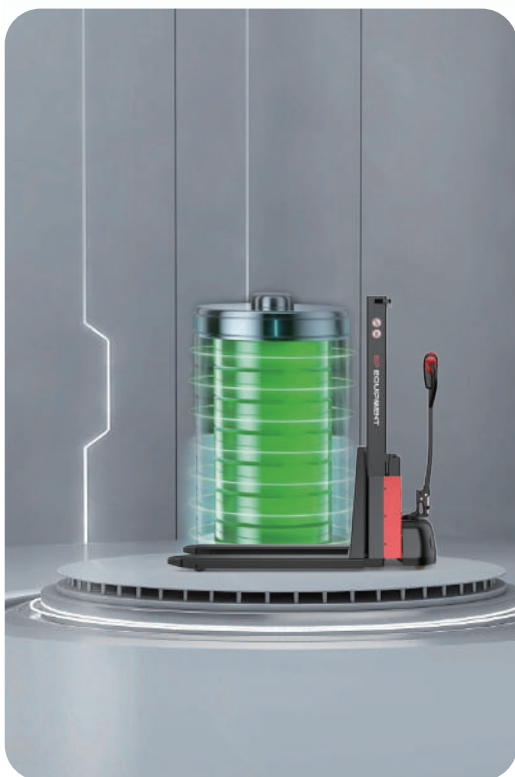
01

Standard removable lithium
battery with opportunity
charging and zero maintenance

02

CAN-BUS communication

03



Maneuverability and Efficiency

Standard turtle speed for good maneuverability
in narrow aisles

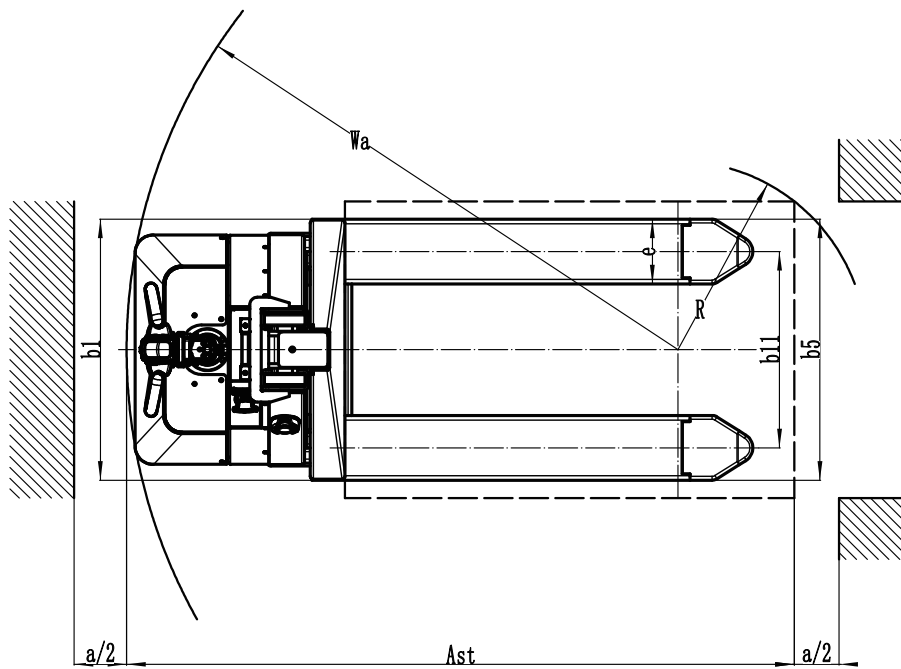
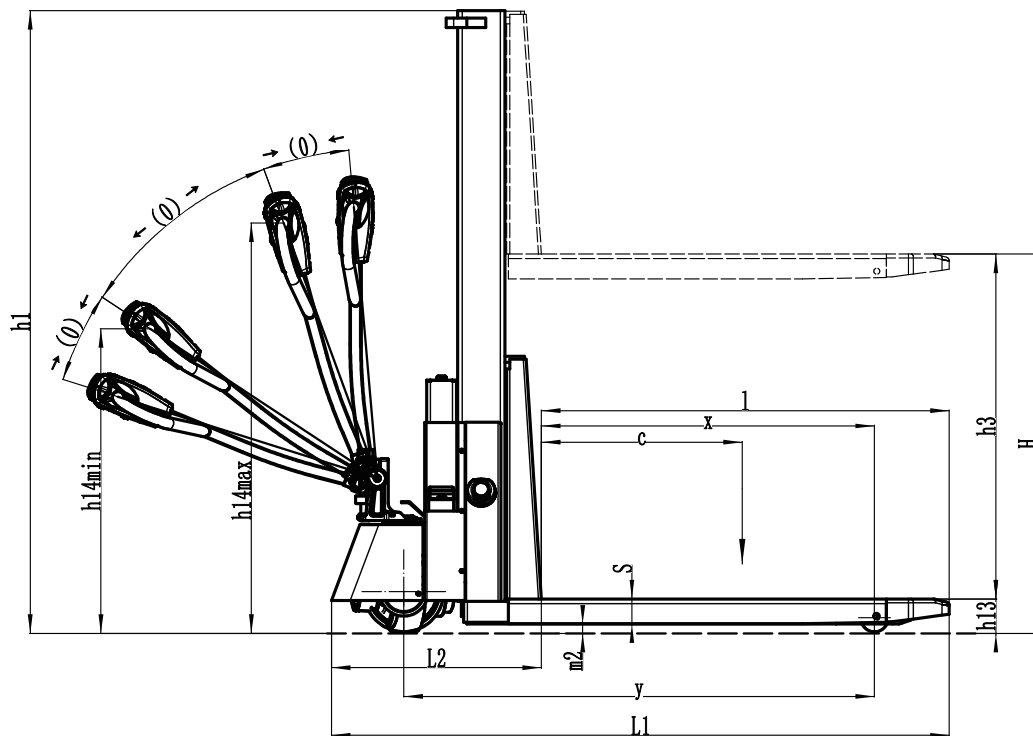
Max. Gradeability 5/8% (laden/unladen)

High-lift Pallet Truck 1200kg

EPT12-F3H

Distinguishing mark	1.1	Manufacturer			EP
	1.2	Model designation			EPT12-F3H
	1.3	Drive			Electric
	1.4	Operator type			Pedestrian
	1.5	Load capacity	Q	kg	1200
	1.6	Load center distance	c	mm	500
	1.8	Load distance, centre of drive axle to fork	x	mm	874
	1.9	Wheelbase	y	mm	1235
Service weight	2.1	Service weight		kg	263
	2.2	Axle loading, laden front/rear		kg	509/954
	2.3	Axle loading, unladen front/rear		kg	188/75
Tyres/classis	3.1	Tyre type			Polyurethane
	3.2.1	Tyre size, front		mm	Ø210×70
	3.3.1	Tyre size, rear		mm	Ø74×88
	3.4	Additional wheels (castor wheels)		mm	/
	3.5	Wheels, number front/rear (x=drive wheels)		mm	1x. 2/2
	3.6.1	Tread width, front	b10	mm	/
	3.7.1	Tread width, rear	b11	mm	390/515
Dimensions	4	Max. Lift Height	H	mm	990
	4.2	Retracted mast height	h1	mm	1635
	4.3	Free lift	h2	mm	/
	4.4	Lift height	h3	mm	905
	4.5	Height, mast extended	h4	mm	1596
	4.6	Initial lift	h5	mm	/
	4.9	Height of tiller handle in drive position min./max.	h14	mm	760/1140
	4.1	Height of wheel arms	h8	mm	/
	4.15	Lowered height	h13	mm	85
	4.19	Overall length	l1	mm	1625
	4.2	Length to face of forks	l2	mm	525
	4.21	Overall width	b1/b2	mm	616/685
	4.22	Fork dimensions	s/e/l	mm	60/150/1070
	4.24	Fork carriage width	b3	mm	/
	4.25	Distance between fork-arms	b5	mm	560/685
	4.26	Distance between wheel arms/loading surfaces	b4	mm	/
	4.31	Ground clearance, laden, below mast	m1	mm	/
	4.32	Ground clearance, center of wheelbase	m2	mm	30
	4.34.1	Aisle width for pallets 1000×1200 crossways	Ast	mm	2263
	4.34.2	Aisle width for pallets 800×1200 lengthways	Ast	mm	2164
Performance data	4.35	Turning radius	Wa	mm	1400
	5.1	Travel speed, laden/unladen		km/h	3.7/4.0
	5.2	Lifting speed, laden/unladen		m/s	Level 1 0.033/0.045 Level 2 0.048/0.094
	5.3	Lowering speed, laden/unladen		m/s	Level 1 0.054/0.035 Level 2 0.106/0.104
	5.8	Max. gradeability, laden/unladen		%	5/8
Electric-engine	5.1	Service brake			Electromagnetic
	6.1	Drive motor rating S2 60 min		kW	0.75
	6.2	Lift motor rating at S3 15%		kW	1.2
	6.4	Battery voltage/nominal capacity		V/Ah	24/30
	6.5	Battery weight		kg	7
Addition data	8.1	Type of drive control			DC
	10.5	Steering design			Mechanical
	10.7	Sound pressure level at the driver's ear		dB(A)	74

If there are improvements of technical parameters or configurations, no further notice will be given.
The diagram shown may contain non-standard configurations.



Option

Optional items	EPT12-F3H
Fork dimension	● 1070*560○ 1070*685
Drive cover ground clearance	● 35mm
Load wheel type	● Single
Load wheel material	● PU
Drive wheel material	● PU
Battery capacity	● 24V/30Ah Li-ion
Charger	● 24V-10A external charger
Battery indicator	● Without hourmeter
Tiller	● EP small tiller head
Castor wheels	● Yes and not customized
Buzzer	● Yes and not customized
Vertical handle: Creep speed	● Yes and not customized
lifting and lowering function	● Single speed lowering
Note: ●Standard ○ Optional - Inconformity	