

Autoelevadores EFL1603-HV/EFL1803-HV

Eléctrico de Alto Voltaje

Capacidad de Carga 16-18T



Manufacturer			EP	EP	EP	EP
Model designation			EFL1603-HV-9	EFL1603-HV-12	EFL1803-HV-9	EFL1803-HV-12
Drive			Electric	Electric	Electric	Electric
Load capacity	Q	kg	16000	16000	18000	18000
Load center distance	c	mm	900	1200	900	1200
Service weight			23580	24100	24100	26800
Retracted mast height	h1	mm	3640	3640	3700	3700
Lift height			4000	4000	4000	4000
Height, mast extended	h4	mm	5600	5600	5700	5700
Length to face of forks			5195	5550	5550	5550
Overall width			2530	2530	2530	2530
Fork dimensions	s/e/l	mm	90/220/1800	100/250/2400	100/250/1800	110/250/2400
Turning radius			4950	5175	5175	5175
Travel speed, laden/unladen			20/20	20/20	20/20	20/28
Lifting speed, laden/unladen			0.35/0.4	0.4/0.45	0.35/0.4	0.4/0.45
Lowering speed, laden/unladen			0.5/0.35	0.5/0.4	0.5/0.35	0.5/0.4
Drive motor rating S2 60 min			90	90	90	90
Battery voltage/nominal capacity			V/Ah	618.24/228	618.24/228	618.24/228

CONFIGURACIÓN ESTÁNDAR

- Horquillas con guía de rodillos Horquillas de 1800/2440 mm
- Posicionador de horquillas con desplazador lateral: Horquillas con guía de rodillos
- Tablero de horquillas de 2500
- Batería LFP de 618,24 V/228 Ah
- Función de calentamiento de la batería durante la carga
- Telemática para control de su gestión
- Fingertips
- Asiento con suspensión Grammer 85/722 con reposabrazos, calefacción y OPS
- Neumáticos (neumáticos macizos para determinados mercados)
- Cabina para todo tipo de clima con conexión al bastidor con amortiguación de goma, calefacción y aire acondicionado, función de descongelación y desempañado y función de inclinación electrohidráulica
Amortiguador de elevación y descenso del mástil
- Soporte para extintor de incendios
- Interfaz USB de 24 V
- Avisador acústico de marcha atrás
- Sensor de distancia trasera y cámara trasera con pantalla LCD
- Paquete de iluminación: luz de trabajo delantera LED (con luz de lejos y de cerca, luz de dirección, luz de ancho), luz de trabajo LED en el mástil, luces traseras LED tricolores, luz de trabajo trasera LED (con luz de marcha atrás, luz de freno, luz de dirección, luz de ancho), luz de advertencia estroboscópica
- Sistema OPS
 - . Personalización de diferentes longitudes de horquilla
 - . Carro de horquilla personalizado (ancho y tipo)

ACCESORIOS:

Posicionador de horquillas con desplazador lateral: Horquillas con terminal oeste

Posicionador de horquillas con desplazador lateral: Horquillas tipo pasador

- Cargadores
 - . 20 kW (CA trifásica 370 V-460 V, 50-60 Hz, enchufe de 32 A)
 - . 40 kW (CA trifásica 370 V-460 V, 50-60 Hz, enchufe de 63 A)
- Neumáticos macizos/neumáticos que no dejan marcas
- Bocina de voz de marcha atrás (inglés)
- Luces
 - . Luz de advertencia giratoria/luz de advertencia con zumbador giratorio
 - . Puntos azules delanteros en el mástil
 - . Puntos azules traseros Puntos de luz en el contrapeso
- Luces de dirección de área en ambos lados (rojas)
 - . Interfaz de encendedor de cigarrillos 12V5A
 - . Función de límite de velocidad de giro

01 Posicionador de horquillas de tipo pasador



02 Posicionador de horquillas desplazables lateralmente



03 Posicionador de horquillas con guía de rodillos de desplazamiento lateral



Modelo: EFL1603-HV

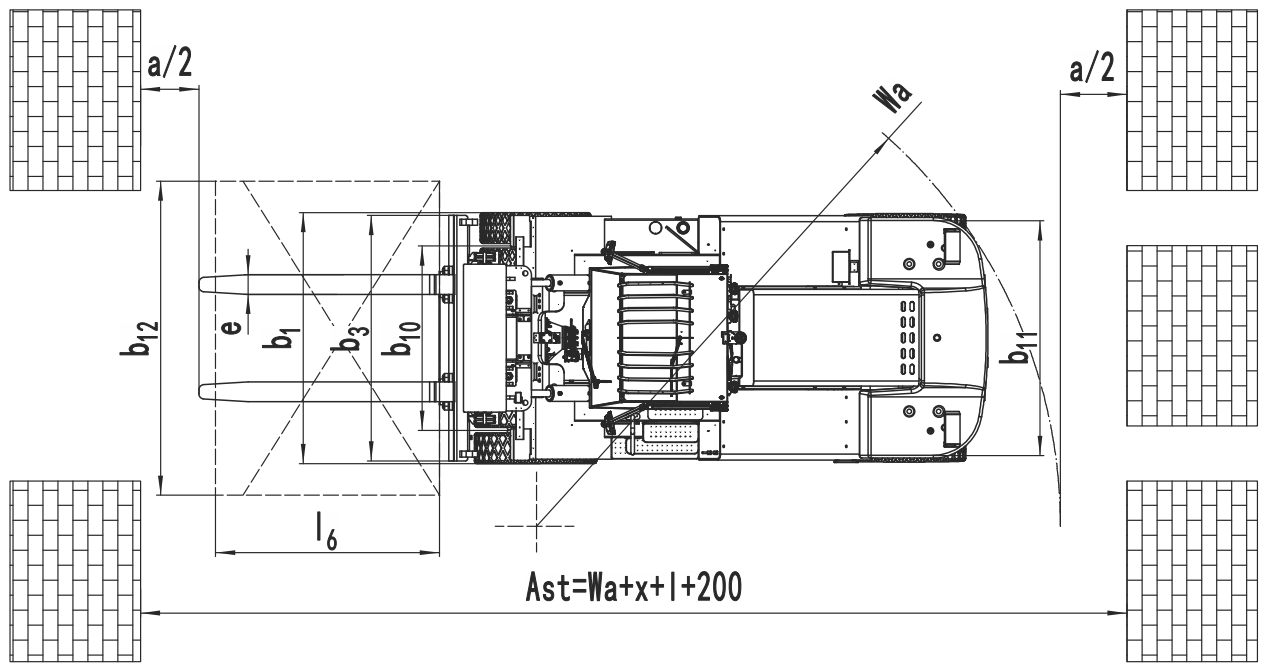
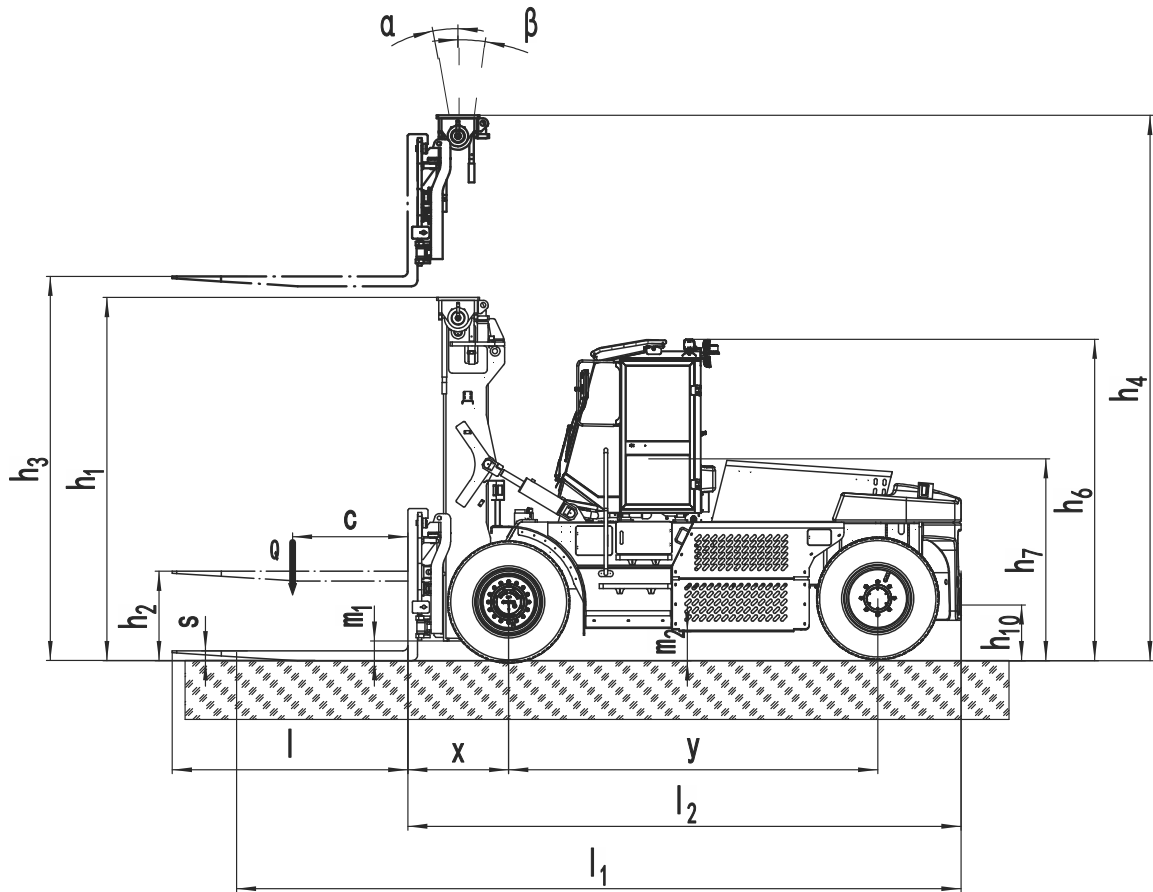
				EP	EP	
Distinguishing mark	1.1	Manufacturer			EP	
	1.2	Model designation		EFL1603-HV-9	EFL1603-HV-12	
	1.3	Drive		Electric	Electric	
	1.4	Operator type		Seated	Seated	
	1.5	Load capacity	Q	kg	16000	16000
	1.6	Load center distance	c	mm	900	1200
	1.8	Load distance ω centre of drive axle to fork	x	mm	950	950
	1.9	Wheelbase	y	mm	3500	3750
	Service weight	2.1	Service weight		kg	23580
2.2		Axle loading, laden front/rear		kg	36800/2780	37070/3030
2.3		Axle loading, unladen front/rear		kg	11580/12000	11800/12300
Tyres/chassis	3.1	Tyre type			pneumatic	pneumatic
	3.2	Tyre size, front			12.00-20-20PR	12.00-20-20PR
	3.3	Tyre size, rear			12.00-20-20PR	12.00-20-20PR
	3.5	Wheels, number front/rear (x=drive wheels)		mm	4x/2	4x/2
	3.6	Tread width, front	b	mm	1880	1880
	3.7	Tread width, rear	b	mm	2200	2200
	Dimensions	4.1	Tilt of mast/fork carriage forward/backward	α/β	°	6/12
4.2		Retracted mast height	h	mm	3640	3640
4.3		Free lift	h	mm	100	100
4.4		Lift height	h	mm	4000	4000
4.5		Height, mast extended	h	mm	5600	5600
4.7		Height of overhead guard (cabin)	h	mm	3160	3160
4.8		Seat height/standing height	h	mm	2000	2000
4.12		Tow coupling height	h	mm	430	430
4.19		Overall length	l	mm	7015	7950
4.20		Length to face of forks	l	mm	5195	5550
4.21		Overall width	b/b	mm	2530	2530
4.22		Fork dimensions	s x e x l	mm	90/220/1800	100/250/2400
4.23		A,B Fork carriage class/type A, B			/	/
4.24		Fork carriage width	b	mm	2500	2500
4.31		Ground clearance, laden, below mast	m	mm	155	155
4.32		Ground clearance, center of wheelbase	m	mm	300	265
4.34.1		Aisle width for pallets 1000x1200 crossways	Ast	mm	7920	8725
4.34.2	Aisle width for pallets 800x1200 lengthways	Ast	mm	7920	8725	
4.35	Turning radius	Wa	mm	4950	5175	
Performance data	5.1	Travel speed, laden/unladen		km/h	20/20	20/20
	5.2	Lifting speed, laden/unladen		m/s	0.35/0.4	0.4/0.45
	5.3	Lowering speed, laden/unladen		m/s	0.5/0.35	0.5/0.4
	5.5	Drawbar pull, laden/unladen		N	92000/92000	92000/92000
	5.6	Max. drawbar pull, laden/unladen		N	95000/95000	95000/95000
	5.8	Max. gradeability, laden/unladen		%	20/30	20/30
	5.10	Service brake			Hydraulic	Hydraulic
5.11	Parking brake			Hydraulic	Hydraulic	
Electric-engine	6.1	Drive motor rating S2 60 min		kW	90	90
	6.2	Lift motor rating at S3 15%		kW	60	60
	6.4	Battery voltage/nominal capacity		V/Ah	618.24/228	618.24/228
	6.5	Battery weight		kg	932	932
	6.6	Energy consumption according to DIN EN 16796		kWh/h	20.9	20.9
	6.7	Turnover output according to VDI 2198		t/h	/	/
Drive/lift mechanism	6.8	Turnover efficiency according to VDI 2198		t/kWh	/	/
	8.1	Type of drive control			AC	AC
Addition data	10.1	Operating pressure for attachments		bar	180	180
	10.2	Oil volume for attachments		ℓ/min	60	80
	10.5	Steering design			Hydraulic	Hydraulic
	10.7	Sound pressure level at the driver's ear		dB(A)	75	75
	15.1	Charger output current		A	115	115

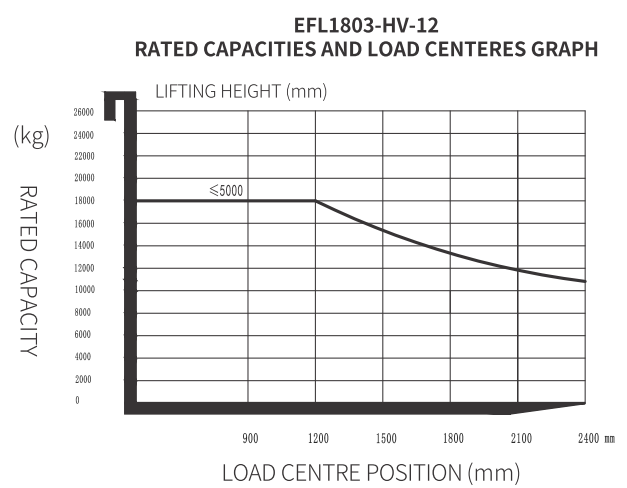
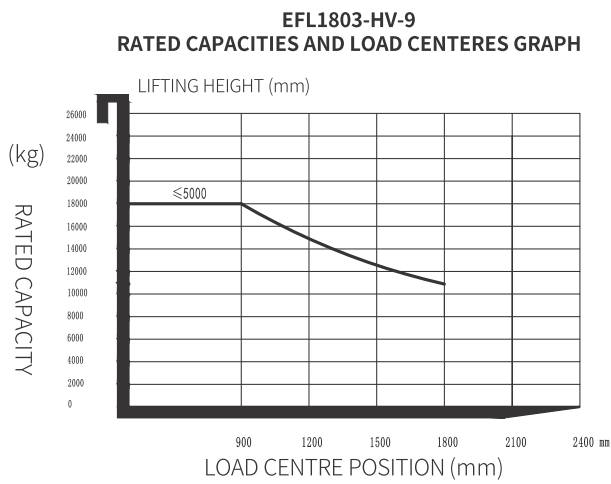
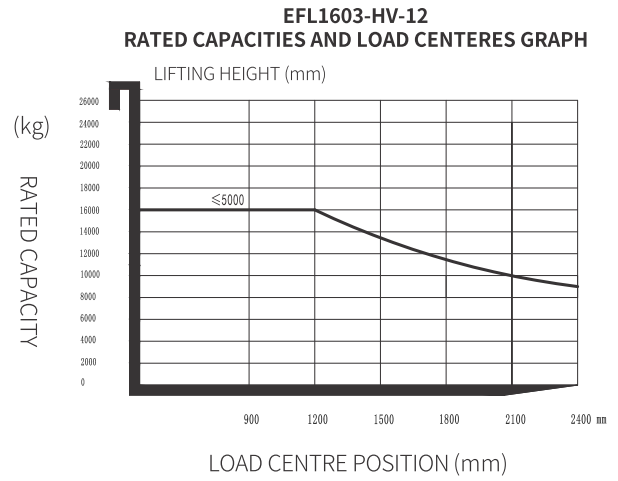
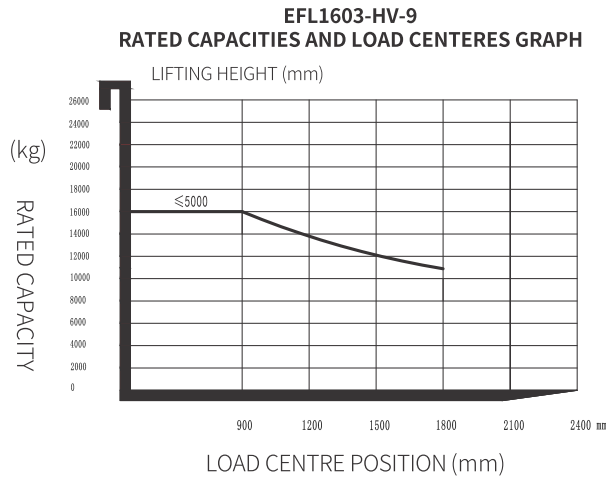
If there are improvements of technical parameters or configurations, no further notice will be given.
The diagram shown may contain non-standard configurations.

Modelo: EFL1803-HV

Distinguishing mark	1.1	Manufacturer			EP	EP
	1.2	Model designation			EFL1803-HV-9	EFL1803-HV-12
	1.3	Drive			Electric	Electric
	1.4	Operator type			Seated	Seated
	1.5	Load capacity	Q	kg	18000	18000
	1.6	Load center distance	c	mm	900	1200
	1.8	Load distance \varnothing centre of drive axle to fork	x	mm	950	950
	1.9	Wheelbase	y	mm	3750	3750
	Service weight	2.1	Service weight		kg	24100
2.2		Axle loading, laden front/rear		kg	38770/33300	41470/33300
2.3		Axle loading, unladen front/rear		kg	11800/12300	12500/14300
Tyres/chassis	3.1	Tyre type			pneumatic	pneumatic
	3.2	Tyre size, front			12.00-24-24PR	12.00-24-24PR
	3.3	Tyre size, rear			12.00-24-24PR	12.00-24-24PR
	3.5	Wheels, number front/rear (x=drive wheels)		mm	4x/2	4x/2
	3.6	Tread width, front	b	mm	1880	1880
	3.7	Tread width, rear	b	mm	2200	2200
	Dimensions	4.1	Tilt of mast/fork carriage forward/backward	α/β	$^{\circ}$	6/12
4.2		Retracted mast height	h	mm	3700	3700
4.3		Free lift	h	mm	110	110
4.4		Lift height	h	mm	4000	4000
4.5		Height, mast extended	h	mm	5700	5700
4.7		Height of overhead guard (cabin)	h	mm	3220	3220
4.8		Seat height/standing height	h	mm	2050	2050
4.12		Tow coupling height	h	mm	430	430
4.19		Overall length	l	mm	7370	7950
4.20		Length to face of forks	l	mm	5550	5550
4.21		Overall width	b/b	mm	2530	2530
4.22		Fork dimensions	s \times e \times l	mm	100/250/1800	110/250/2400
4.23		A,B Fork carriage class/type A, B			/	/
4.24		Fork carriage width	b	mm	2500	2500
4.31		Ground clearance, laden, below mast	m	mm	165	165
4.32		Ground clearance, center of wheelbase	m	mm	265	265
4.34.1		Aisle width for pallets 1000 \times 1200 crossways	Ast	mm	8145	8725
4.34.2		Aisle width for pallets 800 \times 1200 lengthways	Ast	mm	8145	8725
4.35		Turning radius	Wa	mm	5175	5175
Performance data		5.1	Travel speed, laden/unladen		km/h	20/20
	5.2	Lifting speed, laden/unladen		m/s	0.35/0.4	0.4/0.45
	5.3	Lowering speed, laden/unladen		m/s	0.5/0.35	0.5/0.4
	5.5	Drawbar pull, laden/unladen		N	92000/92000	92000/92000
	5.6	Max. drawbar pull, laden/unladen		N	95000/95000	95000/95000
	5.8	Max. gradeability, laden/unladen		%	20/30	20/30
	5.10	Service brake			Hydraulic	Hydraulic
	5.11	Parking brake			Hydraulic	Hydraulic
	6.1	Drive motor rating S2 60 min		kW	90	90
	6.2	Lift motor rating at S3 15%		kW	60	60
	Electric-engine	6.4	Battery voltage/nominal capacity		V/Ah	618.24/228
6.5		Battery weight		kg	932	932
6.6		Energy consumption according to DIN EN 16796		kWh/h	20.9	20.9
6.7		Turnover output according to VDI 2198		t/h	/	/
6.8		Turnover efficiency according to VDI 2198		t/kWh	/	/
Drive/lift mechanism		8.1	Type of drive control			AC
	10.1	Operating pressure for attachments		bar	180	180
Addition data	10.2	Oil volume for attachments		l/min	80	80
	10.5	Steering design			Hydraulic	Hydraulic
	10.7	Sound pressure level at the driver's ear		dB(A)	\leq 75	\leq 75
	15.1	Charger output current		A	115	115

If there are improvements of technical parameters or configurations, no further notice will be given.
The diagram shown may contain non-standard configurations.





OPCIONES DE MÁSTIL

EFL1603-HV

Mast types	Lift height (h3) mm	Height, Mast			Height, Free lift(h2)	
		Height, mast lowered(h1) mm	Height, mast extended(h4)		No backrest mm	With backrest mm
			No backrest mm	With backrest mm		
2-Standard Mast	3500	3380	5080	5080	100	100
	4000	3640	5600	5600	100	100
	4200	3690	5740	5740	100	100
	4500	3840	6040	6040	100	100
	5000	4090	6540	6540	100	100
3-Free Mast	4500	3070	6070	—	1500	—
	4710	3140	6280	—	1570	—
	5000	3237	6570	—	1667	—
	5500	3403	7070	—	1833	—
	6000	3570	7570	—	2000	—
	6500	3737	8070	—	2167	—
	7000	3903	8570	—	2333	—

EFL1803-HV

Mast types	Lift height (h3)	Height, Mast			Height,Free lift(h2)	
		Height, mast lowered(h1)	Height, mast extended(h4)		No backrest	With backrest
			No backrest	With backrest		
	mm	mm	mm	mm	mm	mm
2-Standard Mast	3500	3440	5140	5140	110	110
	4000	3700	5660	5660	110	110
	4200	3750	5800	5800	110	110
	4500	3900	6100	6100	110	110
	5000	4150	6600	6600	110	110
3-Free Mast	4500	3130	6130	—	1500	—
	4710	3200	6340	—	1570	—
	5000	3297	6630	—	1667	—
	5500	3463	7130	—	1833	—
	6000	3630	7630	—	2000	—
	6500	3797	8130	—	2167	—
	7000	3963	8630	—	2333	—